

Port area EcoRhena

Rhin Brisach



Port Rhénan Colmar Neuf-Brisach
© Port Rhénan

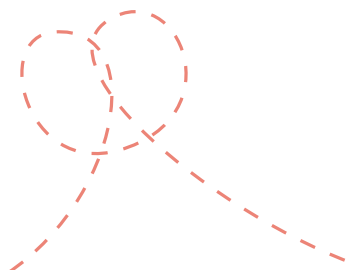


A dynamic cross-border economic region

Located **along the Rhine**, the Alsace Rhin Brisach territory is strategically positioned in central Alsace, within the **Colmar-Mulhouse-Freiburg im Breisgau triangle**, a vital **cross-border French-German region**. One of the major assets of the region is the **Rhine Port of Colmar/Neuf-Brisach**, which offers **multimodal transport solutions** for businesses.

The Port, **positioned along the Alsace Canal**, provides large

plots of land **ideal for extensive industrial projects** on its EcoRhéna area. This territory hosts **around 1,000 businesses**, including notable companies such as **Constellium, DS Smith, Essity, Fiberweb, Wrigley, and Schilliger Bois**.



imagine

Alsace

FOR YOUR LIFE AND BUSINESS

Port area EcoRhena Rhin Brisach



SURFACE

Planned total area: 22 ha
Available area: 10 ha



BUSINESSES OPERATING NEARBY

Rhine Port, Constellium, FMC France, DS Smith Packaging...



FACILITIES

Water supply: yes
Power supply: medium voltage
Gas supply: yes
High-Speed Internet: yes



ACCESSIBILITY

Colmar: 30 km
Mulhouse: 36 km
Strasbourg: 100 km
Port Rhénan (Rhine Port): 16 km
Motorway A35: 18 km
Motorway A36: 28 km
Motorway A5: 6 km
EuroAirport
Basel-Mulhouse-Freiburg: 49 km
Strasbourg Airport: 94 km
Zurich Airport: 135 km
Frankfurt Airport: 282 km



ADIRA.Alsace



ADIRA.Alsace



@ADIRA_Alsace

Jean-Michel Staerlé

+33 (0)3 88 52 82 82 | jean-michel.staerle@adira.com

www.adira.com | e-mail : alsace@adira.com